

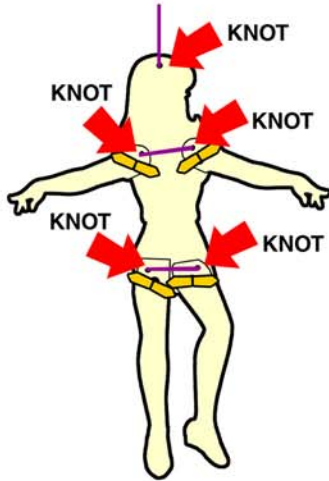
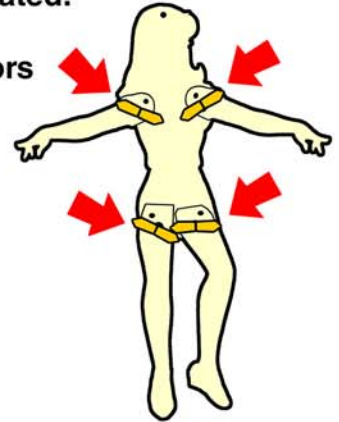
# Betty and Veronica

## Marionettes

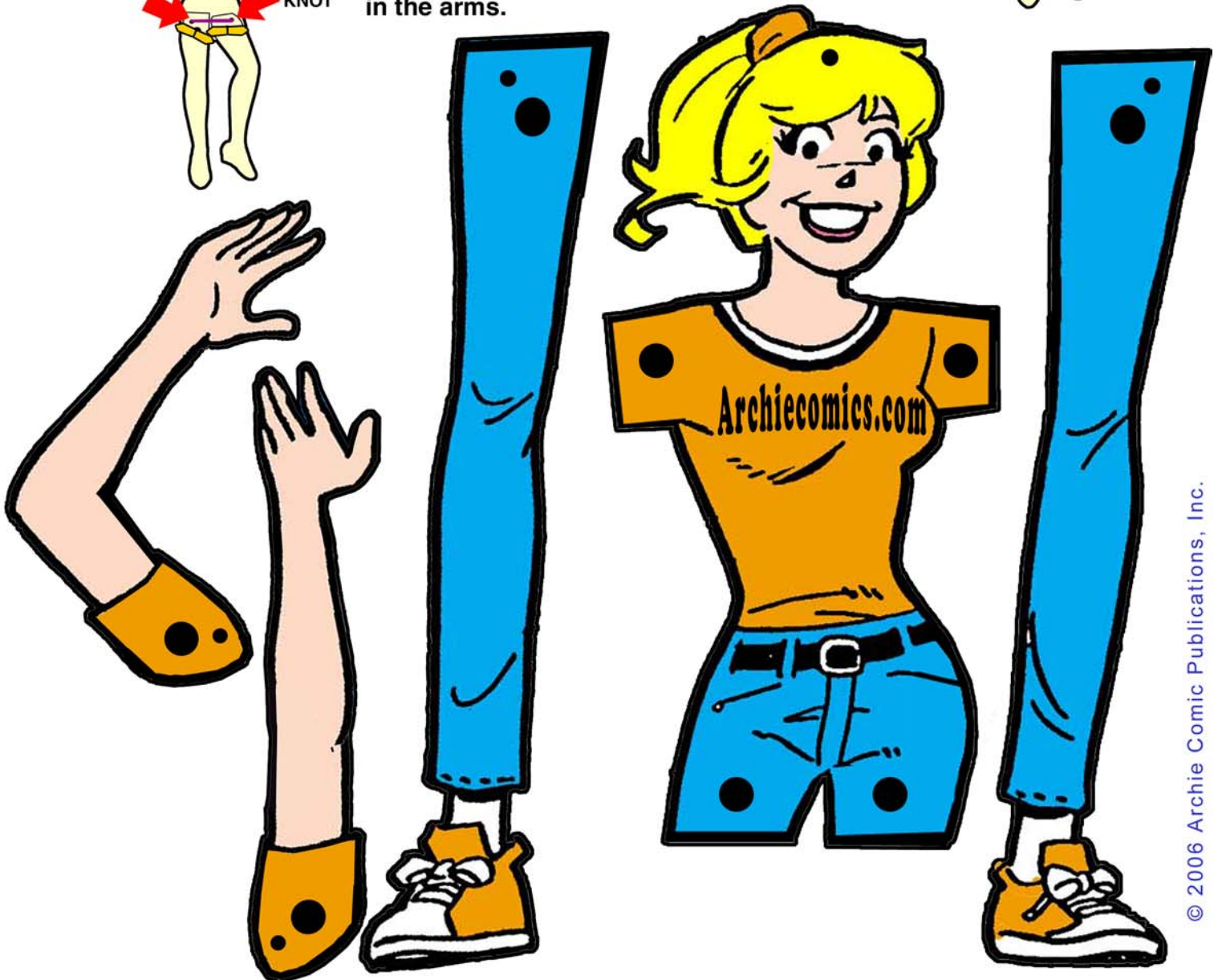
### Directions:

1. Paste printed out pages to thin cardboard or heavy construction paper and allow to dry.
2. Cut out all the body parts and punch holes where the large black holes are located.

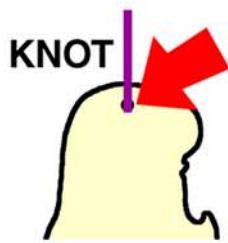
3. Use brass paper connectors through the large holes to connect the arms and legs to the bodies.



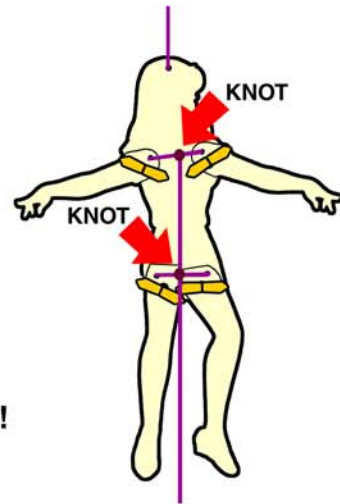
4. On the backside of the figure use a needle and thread to thread a string between the small holes in the legs. Then tie the ends. Next, do the same with the small holes in the arms.



5. Thread and tie another string through the small hole in the marionette's head. Make a loop in the end of this string so you can hang the marionette up.



6. Next, tie another string to the middle of the string connecting the arms and also tie it to the string connecting the legs and let it hang down. This will be the pull string that allows the arms and legs to move.



7. Put on a Betty and Veronica marionette show!

